

Oatey[®]*Mystic*[™]

Rainwater Collection System



Recycle Your Rainwater


*Easily Applied to Most
Downspouts*

*Environmentally Friendly,
Sustainable Practice*

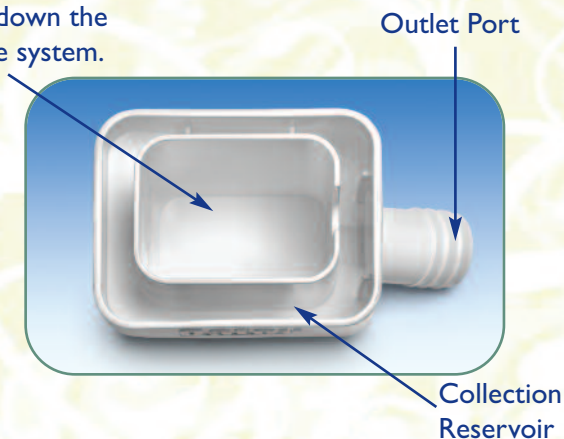
What is a rainwater collection system?

- Oatey Mystic™ directs rainwater from downspouts into collection barrels (not included) for re-use in lawn and garden watering.
- The 2-piece design is made of durable, UV-resistant material and can be painted to match the downspout color.
- The Mystic™ is easily installed and will fit on a standard 2"×3" residential downspout. Step by step instructions are included along with a 4' high-flow hose to connect the diverter to the collection container.

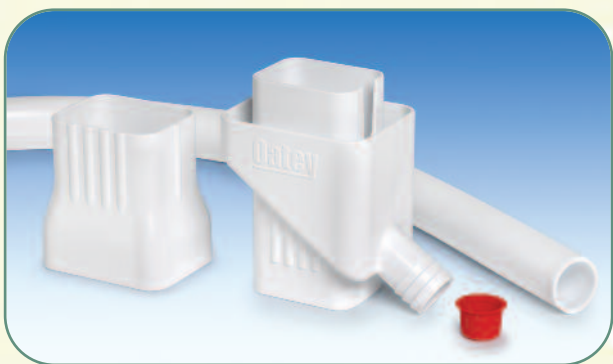
How does the Mystic Rainwater Collection System work?

The Mystic™ Rainwater Collection System has a patent-pending design that works to divert a maximum amount of rainwater through the hose and into a collection container of your choice. The Mystic's unique built-in reservoir channels rainwater flow from the sides of the downspout, while allowing debris such as leaves and dirt to go down the center. The result is more collected rainwater without the unwanted sediment. 

Sediment and debris easily flows down the center of the system.



What elements come in the kit? 



(1) 2-Piece Mystic™ Rainwater
Collection System

(1) 1-1/4" x 4' Flexible Hose

(1) Outlet Port Plug





(1) Detailed Installation
Instruction Sheet




Application Example

Visit www.OateyMystic.com to see the video of this application being installed and to access step by step narrated instructions.

Why should I collect rainwater?

-  Collecting and re-using rainwater from gutters and downspouts for lawns and gardens minimizes the amount of water flowing into storm drains, sewer systems and local waterways.
-  Plants and microbes prefer rainwater because it is naturally “soft” and free of chlorine, fluoride and other chemicals.
-  Millions of pounds of pesticides are applied to lawns each year, contaminating storm water runoff. These chemicals are a primary source of water pollution. Rainwater collection minimizes this runoff, reducing the flow of harmful pollutants into local waterways.
-  Rainwater collection is gaining momentum among concerned citizens and government entities. Many across the country are encouraging rainwater collection through installation assistance programs, tax credits and other financial incentives.

How much rainwater can I collect?

-  You may not realize it, but 623 gallons of water fall on an average 1,000 sq. ft. residential roof, during a period of one-inch of rain*! With a system that is 80% efficient at catching rainwater, the amount of rainwater that can be collected is significant. Assuming 30 inches of annual rainfall (or 2.5 inches per month**), 2,000 gallons of rainwater per month can be harvested using the Mystic™ Rainwater Collection System!

* Based on United States Geological Survey data at <http://ga.water.usgs.gov/edu/earthrain.html>.

** National Oceanic and Atmospheric Administration, State of the Climate, National Overview, Annual 2008.

Installation Instructions

The Oatey Mystic™ easily installs using a minimal amount of tools. You will need a Hand Saw or Rotary Cutting Power Tool, Eye Protection and a Tape Measure.



Step 1

Measure a 6" section of the existing downspout at least 12" above the top of the preferred collection container.



Step 2

Cut out the measured section. To avoid possible damage to the siding, place cardboard or protective material between the downspout and siding.



Step 3

Place the Mystic™ into the downspout section.



Step 4

Slide the top portion of the Mystic™, nesting it into the bottom reservoir and attach the hose to the outlet port.



Step 5

Connect the hose to the collection container and enjoy the results of sustainable rainwater collection.

The Mystic can be kept in the downspout regardless of the weather conditions. For those in cold weather areas, the usual freezing and thawing will have no impact on the product. We recommend that you remove the hose from the collection barrel and insert the red outlet port plug during the winter months. This will allow the water to flow through the downspout and into the sewer line.

Mystic can be used with most rain barrels. With the large variety of styles, shapes and valves available, please research thoroughly before committing to a collection container.

Ordering Information:



#14209
Mystic Rainwater
Collection System
English/Spanish Display Box
- USA
Package Quantity: 4
Carton Weight: 9.8
UPC code: 038753-142098

#14211
Mystic Rainwater
Collection System
English/French Display Box
- Canada
Package Quantity: 4
Carton Weight: 9.8
UPC code: 038753-142111

Oatey
4700 W. 160th St. Cleveland, OH 44135
www.OateyMystic.com 800-321-9532